

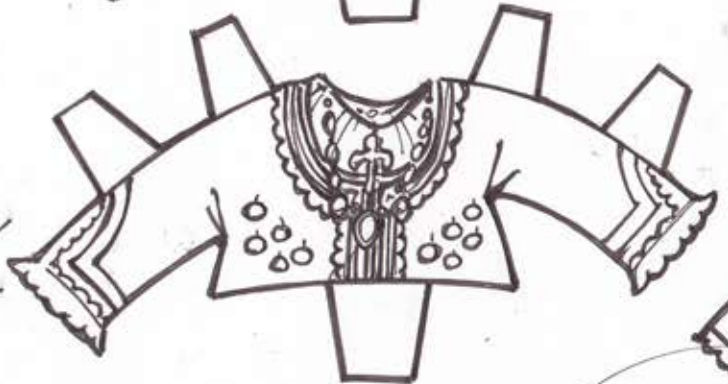
Chambra



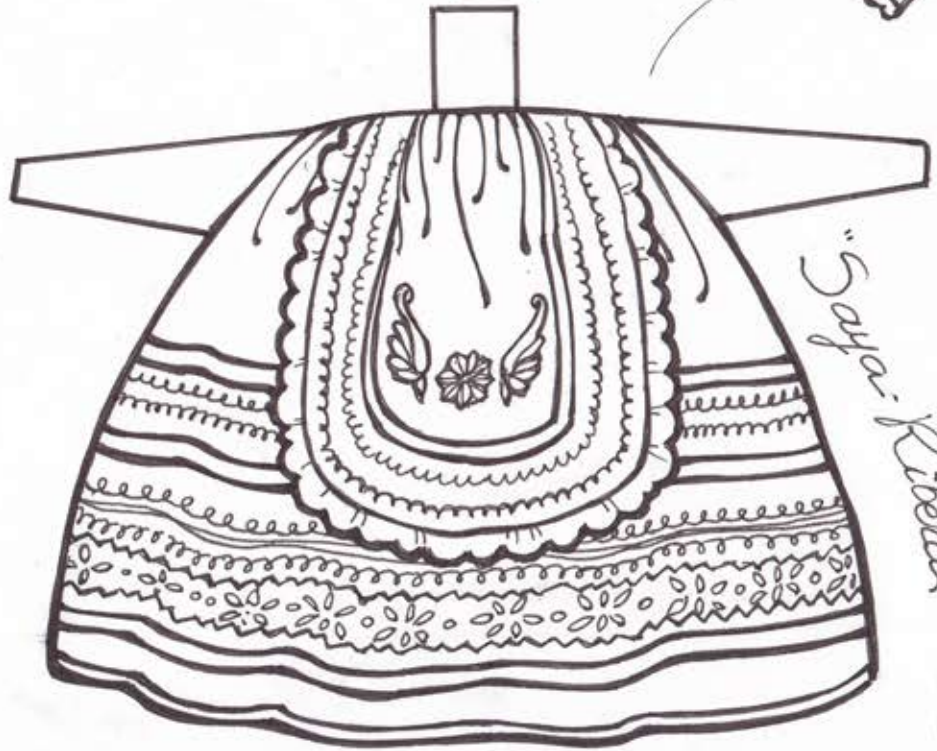
Tubona?



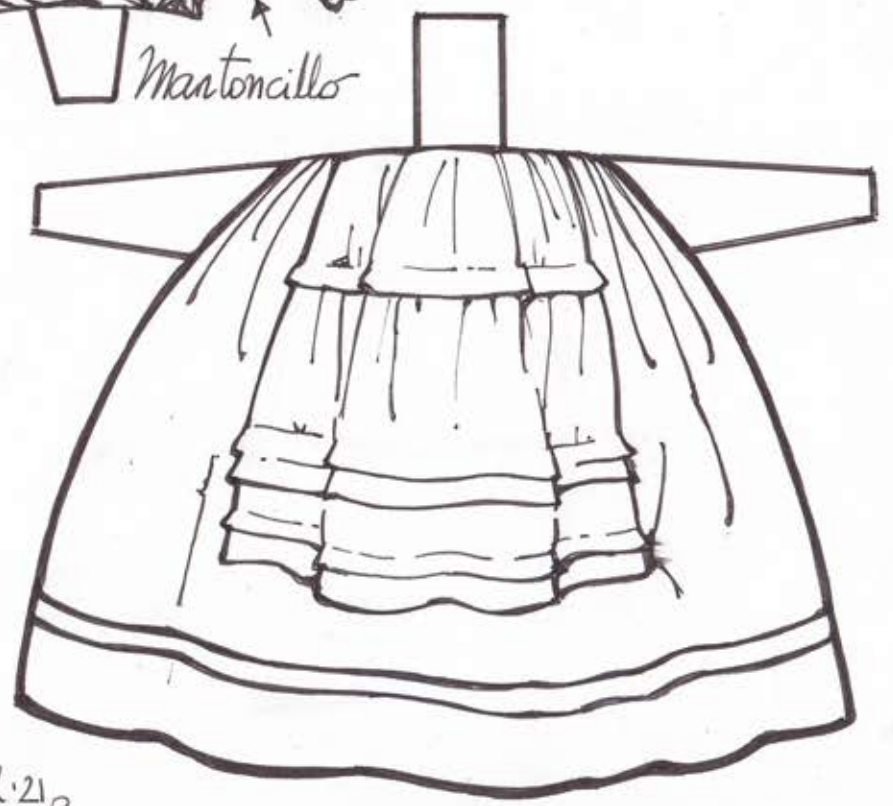
Jubón



Mantoncillo

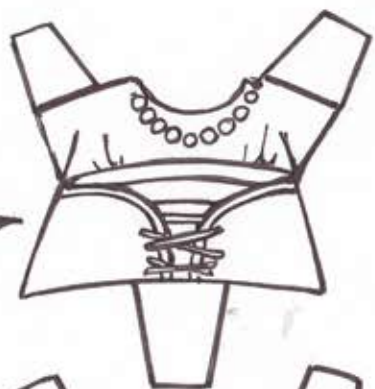


"Saya: Ribera"

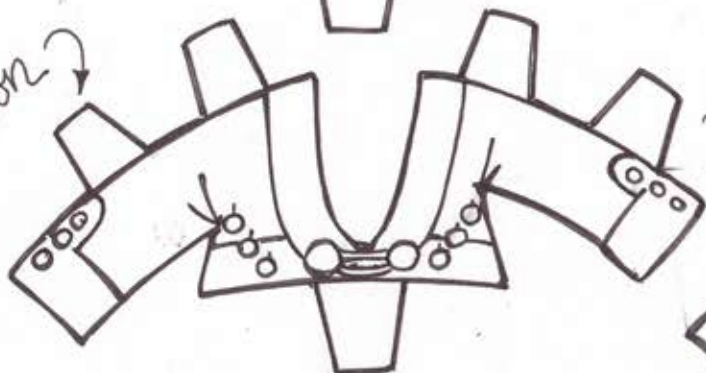


Oscar FR. 21

Justillo



Jubón



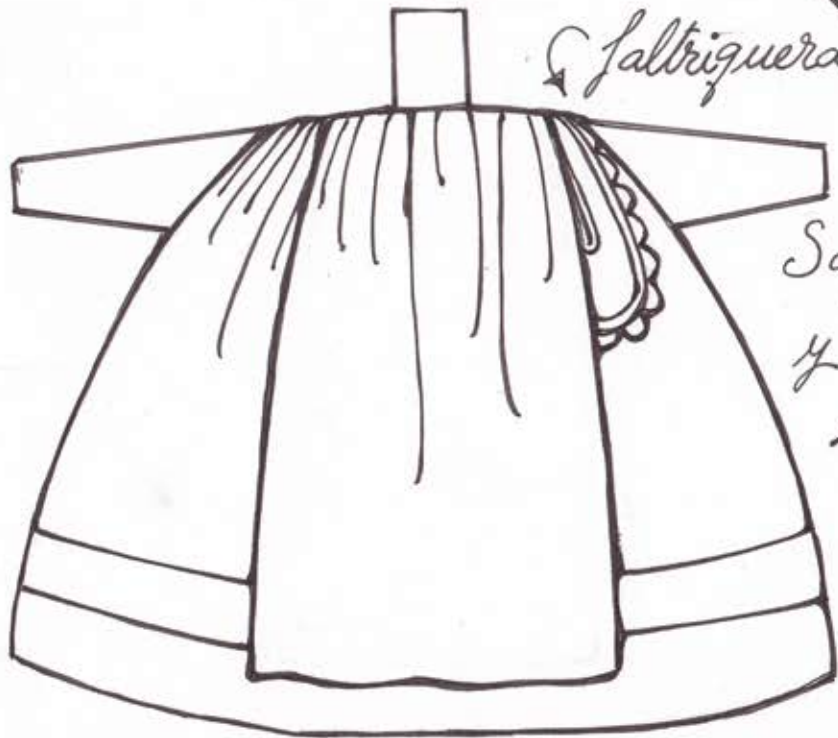
Jubón serrano



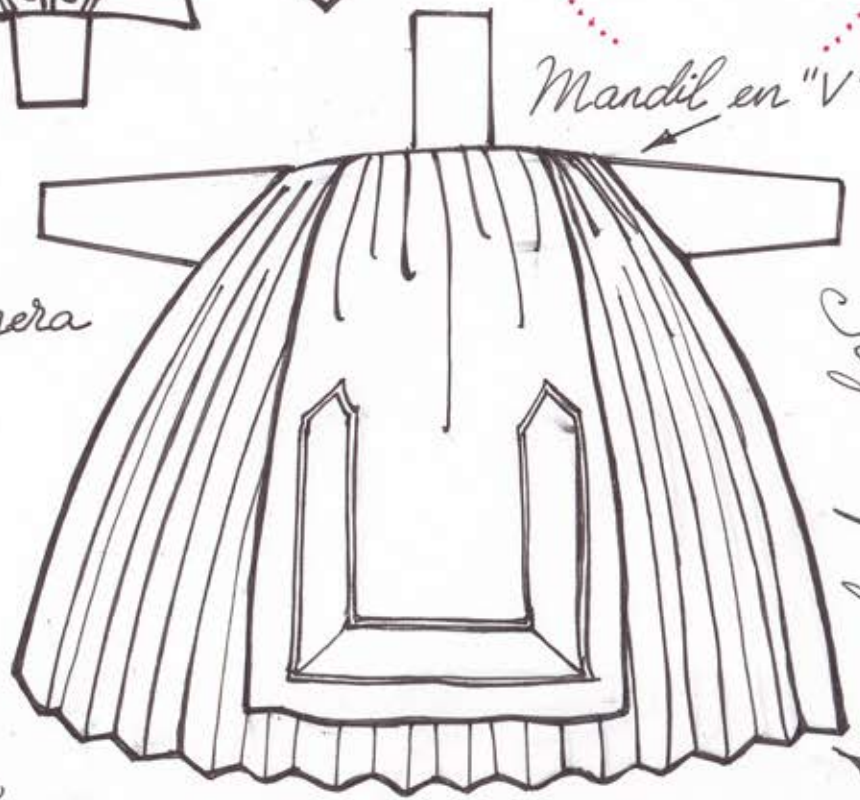
Armillas
Hoja Castriello de la Reina
Pañuelos



Saltriguera



Saya encimera
y mandil



Mandil en "V"

Saya encimera
"pregada"

Oscar FR '21

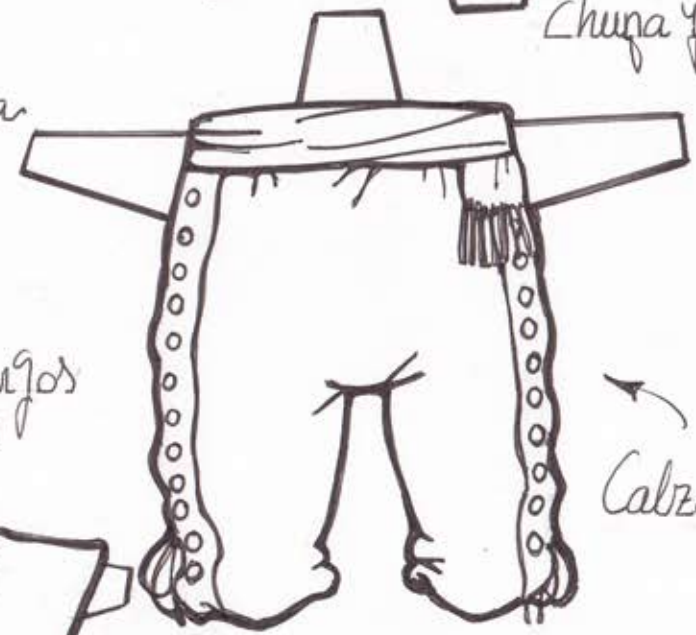
Montera



Chupa y chaleco

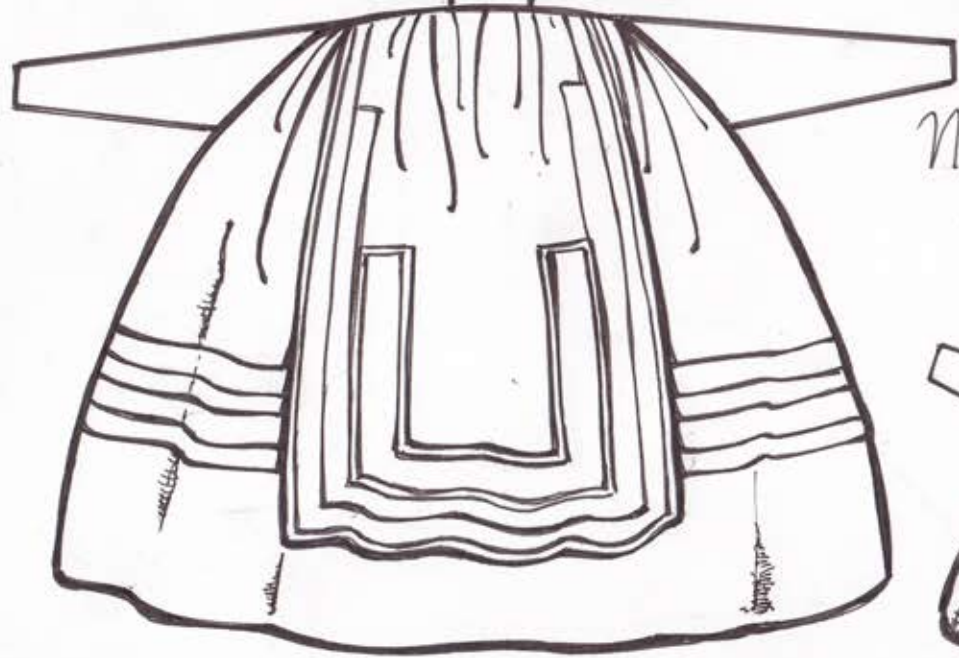


Albarca



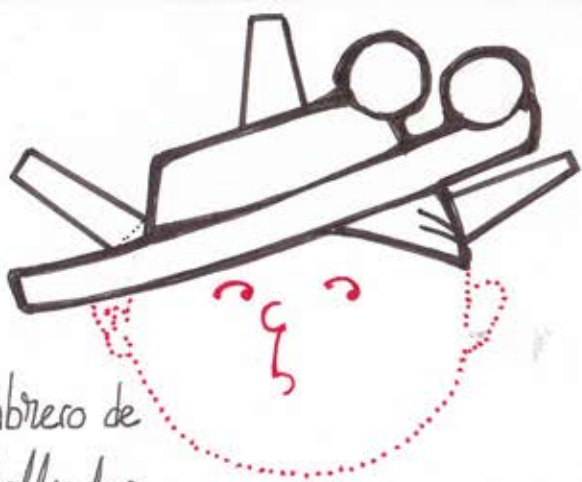
Calzón corto

Norte de Bugos y pasiegos

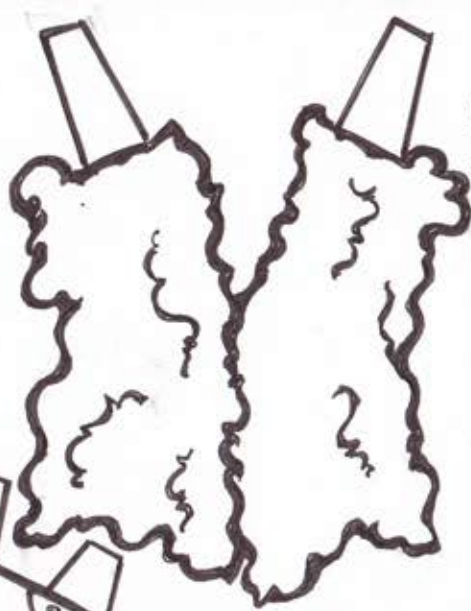


Albarca y esarpines

Osca R. 21



Sombrero de Velludo



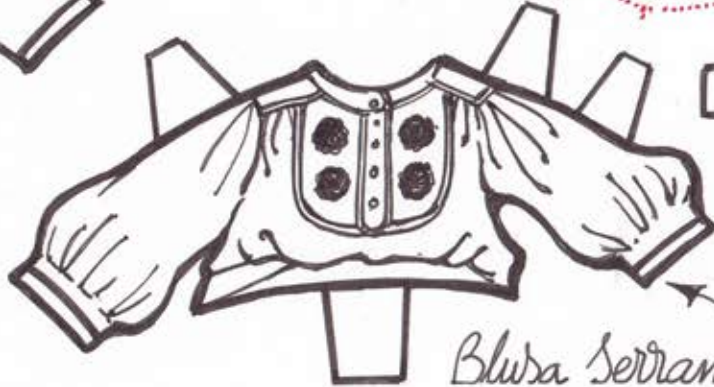
Chaleco



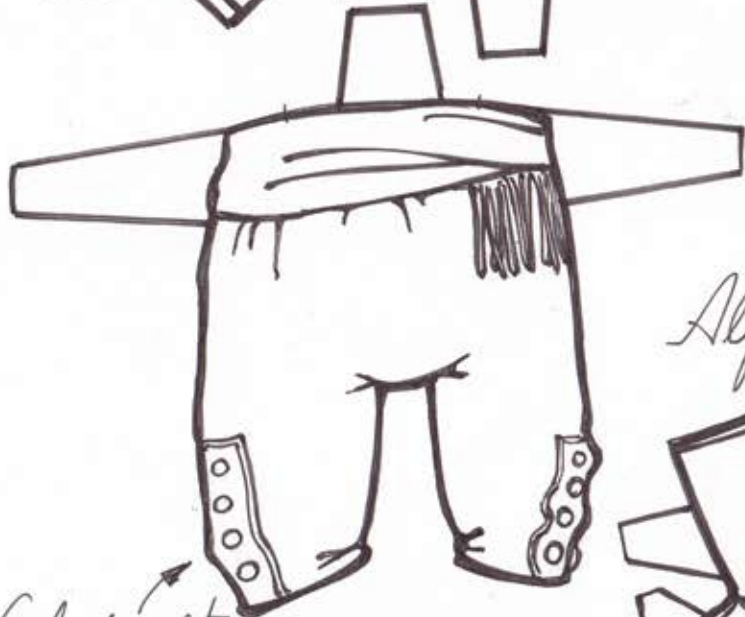
Alforja
Gorro pellerero



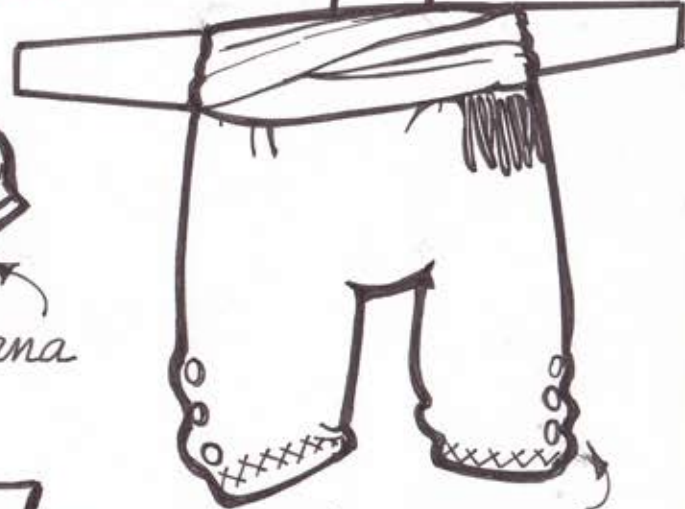
Chaqueta ó Chupa



Blusa Serrana



Calzón corto



Calzón Serrano

Alpargata?



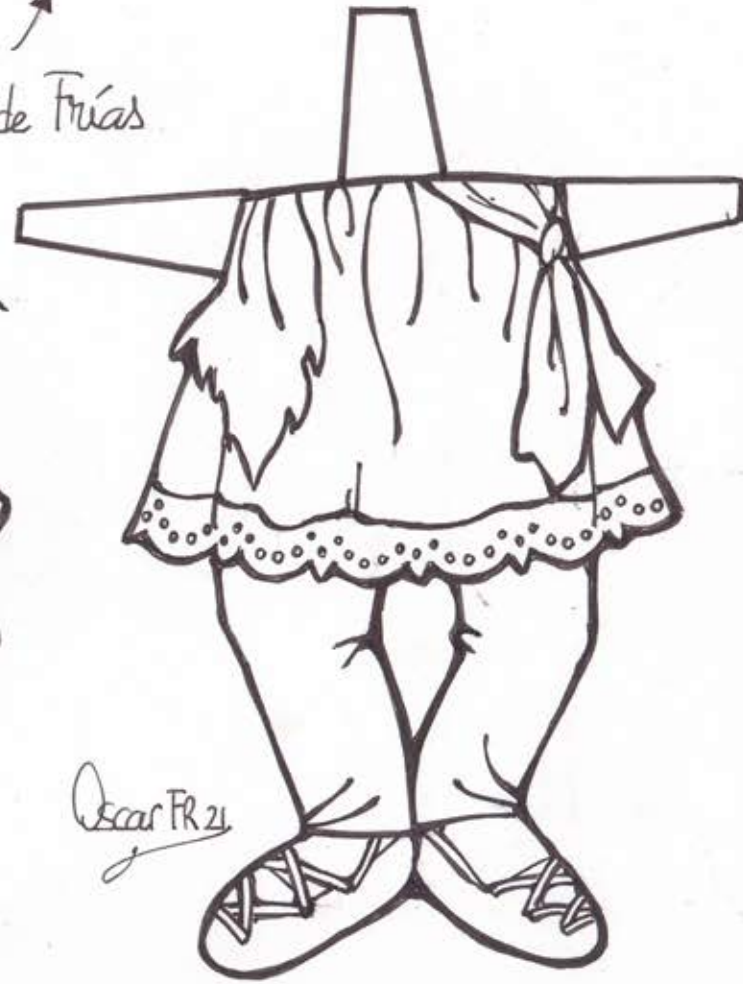
Albarca



Danzante de Frías
(Burgos)



Danzante de Burgos



Oscar FR 21